

FIXED SMOKE CURTAINS

GSF KDS

Smoke curtains **GSF KDS KTISISSOL** are intended to be used in buildings as barriers dividing space into smoke compartments. Their primary functions include:

- creating smoke compartments by containing and limiting the movement of smoke,
- redirecting the movement of smoke,
- preventing and delaying any influx of smoke into other areas or into air gaps.

Due to their design, smoke curtains can be combined modularly, allow to create security measures of unlimited dimensions. The curtains are suitable for a wide variety of applications in both public and commercial buildings.



▶ TYPES OF SMOKE CURTAINS GSF KTISISSOL

- **Classified by operating principle**

GSF KDS Smoke curtains - fixed

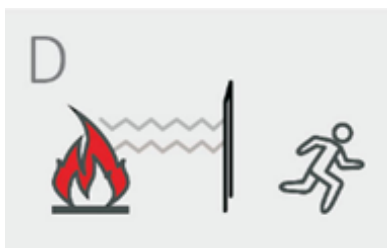
GSF KDR Smoke curtains - mobile

- **Classified by fire resistance class**

KDS D₆₀₀ 160 - Smoke curtain in temperature 600°C shows resistance up to 160 minutes

▶ GSF KDS FIXED CURTAINS CONSTRUCTION

Fixed smoke curtains consists of: curtain coat - made of fire-resistant fabric, fastening element, ballast strip



Limits the spread of smoke ✓

Creation of smoke tank ✓

Smoke direction ✓

▶ ADDITIONAL INFORMATIONS

The curtain coat of the fixed smoke curtain is always kept in the open position, it is ready for operation at any time to separates the appropriate fire zone.

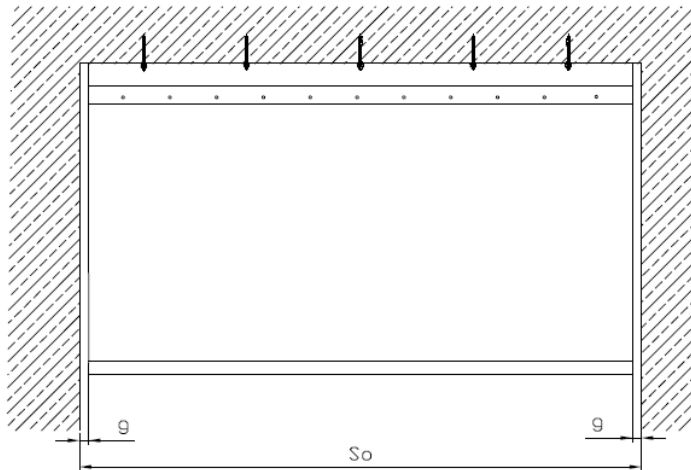
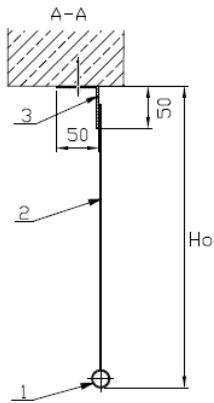
Smoke curtains **GSF KDS KTISISSOL** are made in accordance with the harmonized standard: **EN 12101-1:2005 + A1:2006** Smoke and heat spreading system, Part 1: Technical requirements for smoke curtains.

CONSTRUCTION CONDITIONS

GSF KDS D₆₀₀ 160

The installation conditions specify the space required for the smoke curtains installation. All unrecognized dimensions in terms of construction conditions should be agreed individually.

CEILING MOUNTING

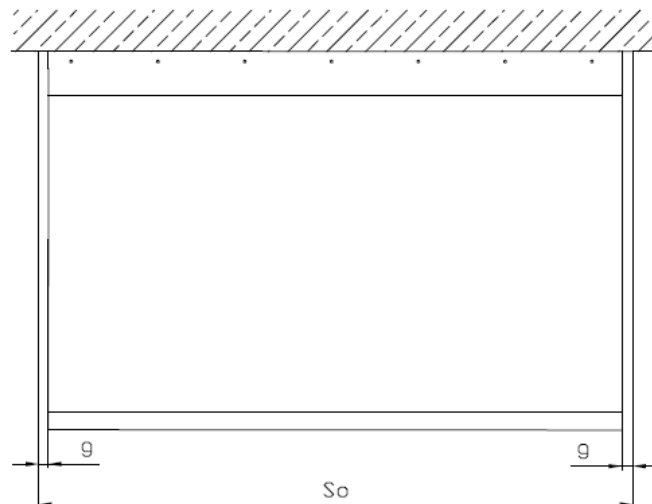
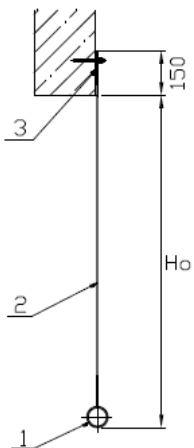


Class	Maximum width [mm]	Maximum height [mm]
D ₆₀₀ 160	without limits	4550

g = 20 mm for Ho ≤ 2000 mm
g = 40 mm for Ho > 2000 ≤ 4550 mm

1. Ballast
2. Coat
3. Mounting bracket

WALL MOUNTING



Class	Maximum width [mm]	Maximum height [mm]
D ₆₀₀ 160	without limits	4550

g = 20 mm for Ho ≤ 2000 mm
g = 40 mm for Ho > 2000 ≤ 4550 mm

1. Ballast
2. Coat
3. Flat bar for assembly

Warning:

The surface for mounting the smoke curtains must be vertical and even (smooth), tolerance +/-1mm/m. Otherwise, the customer is obliged to level the surface before installation.
The documentation made by KTISISSOL is protected by copyright.
The manufacturer has the right to change the dimensions of the development during the execution of the order.
The manufacturer reserves the form of legalization of the product in case of order.

All additional information to be agreed with the KTISISSOL Technical Department.